



Alexandra Crescent, Bromley, BR1 4ET
Guide price £550,000 Freehold

 2
  1
  2
  E

The Homes Group are proud to present to the market this extended detached bungalow, set within a tree lined road, which is offered to the market with no chain. The accommodation is spread over two floors plus has an integral garage which, subject to the necessary approval, could be altered to offer extra living accommodation.

Accommodation comprises of entrance hall with steps to first floor bedroom, spacious living room with archway opening to the dining room, a good sized kitchen, ground floor bedroom with fitted wardrobes, study and modern bathroom with bath & separate shower. Externally there is a compact garden, with access either side, and off road parking to the front.

Entrance Hall

Living Room

16'2 x 14'7 (4.93m x 4.45m)

Dining Room

15'7 x 9'3 (4.75m x 2.82m)

Kitchen

15'1 x 10'9 (4.60m x 3.28m)

Bedroom One

14'7 x 10'2 (4.45m x 3.10m)

Study

10' x 4'8 (3.05m x 1.42m)

Bathroom

9'8 x 7'3 (2.95m x 2.21m)

Bedroom Two

20'6 x 10' widening to 12'6 (6.25m x 3.05m widening to 3.81m)

Rear Garden

Driveway/Front Garden

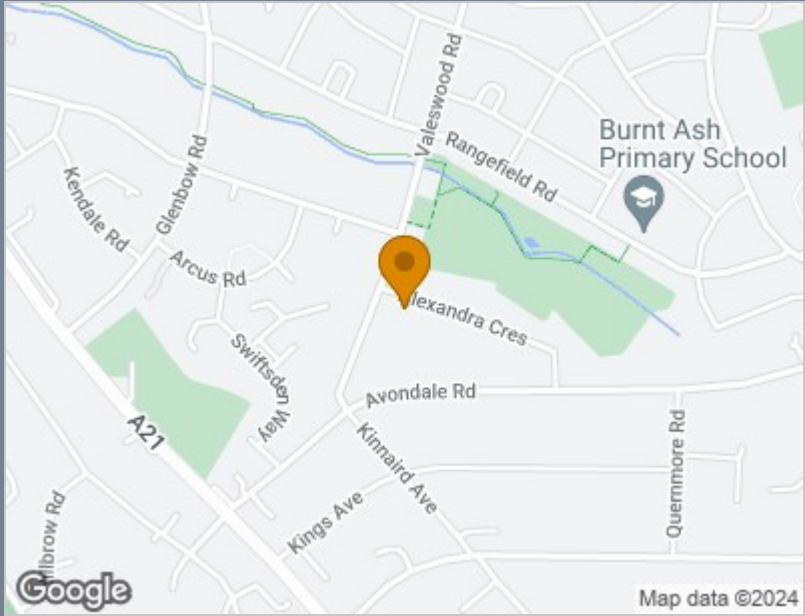
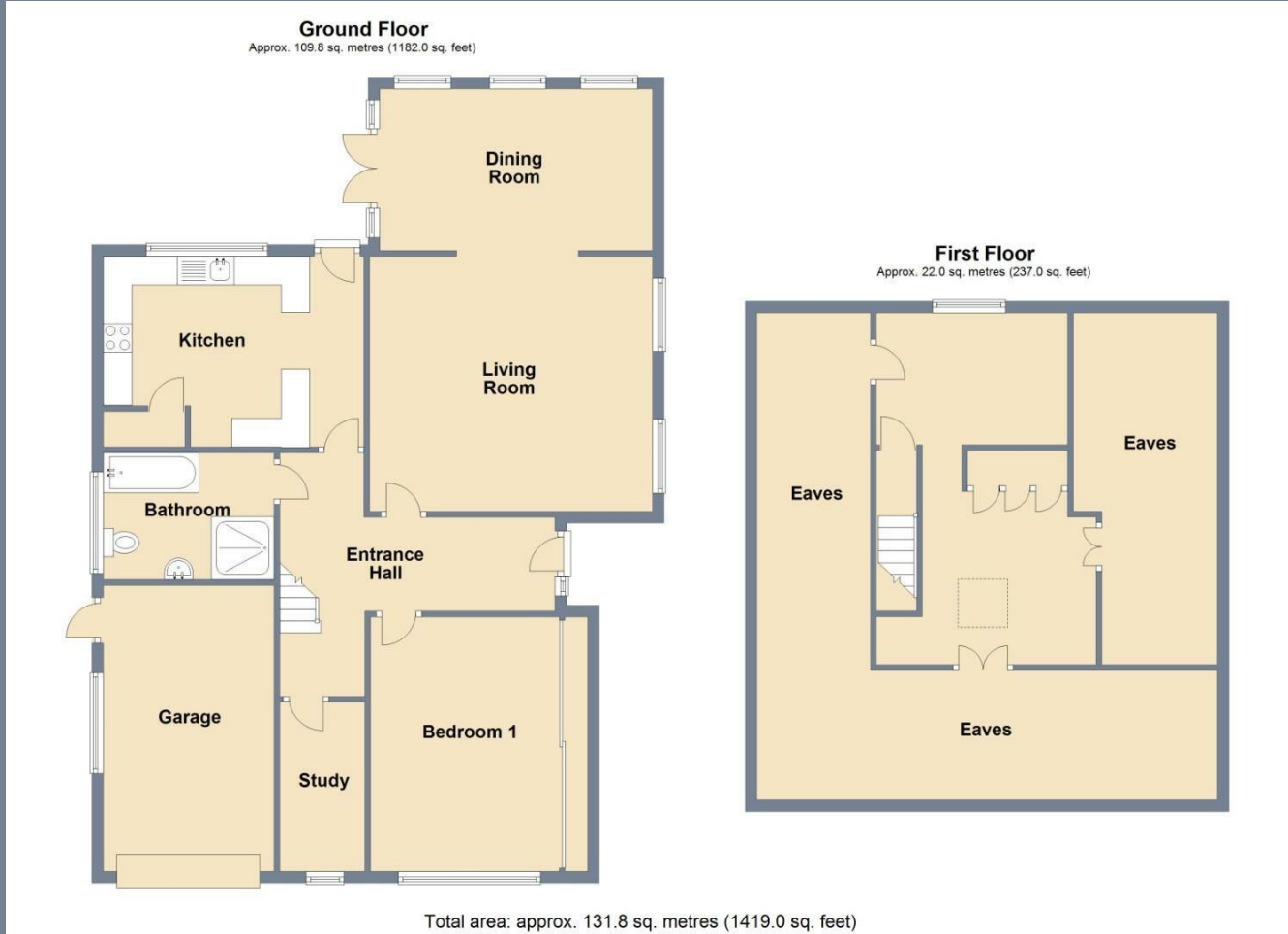
Integral Garage

Tenure - Freehold

Council Tax - Band E







Energy Efficiency Rating		
	Current	Potential
Very energy efficient - lower running costs		
(92 plus) A		
(81-91) B		
(69-80) C		69
(55-68) D		
(39-54) E	43	
(21-38) F		
(1-20) G		
Not energy efficient - higher running costs		
England & Wales	EU Directive 2002/91/EC	

Viewing
Please contact The Homes Group Office on 01322 875000 if you wish to arrange a viewing appointment for this property or require further information.

These particulars, whilst believed to be accurate are set out as a general outline only for guidance and do not constitute any part of an offer or contract. Intending purchasers should not rely on them as statements of representation of fact, but must satisfy themselves by inspection or otherwise as to their accuracy. No person in this firms employment has the authority to make or give any representation or warranty in respect of the property.